

sij | ravne steel

PLASTIC MOULD STEEL

RAVNEX

RS 110

→ PLASTIC MOULD STEEL

Family of RS plastic mould steel

RS grade	W.Nr.	DIN	AISI
RS 100	1.2312	40CrMnMoS8-6	~P20
RS 101	1.2311	40CrMnMo7	~P20
RS 103	1.2738	40CrMnNiMo8-6-1	
RS 105	1.2738 mod. HH		
RS 110 RAVNEX	1.2738 mod. HH ESR		
RS 118	1.2085	X33CrS16	
RS 120 RAVNEX			
RS 130	1.2083 ESR	X42Cr13	420
RS 131	1.2083	X42Cr13	420
RS 140	1.2316 ESR	X36CrMo17	
RS 141	1.2316	X36CrMo17	

CONTENTS

GENERAL CHARACTERISTICS	4
Chemical composition	
Application	
Microstructure in delivered condition	
Toughness	
Qualitative comparison	
PHYSICAL PROPERTIES	7
MECHANICAL PROPERTIES	8
Compressive yield strength	
CONTINUOUS COOLING CURVES-CCT	9
HEAT TREATMENT	10
Annealing	
Stress relieving	
Hardening	
Tempering	
Dimensional changes during hardening and tempering	
WELDING AND EDM	12
Welding	
Electrical discharge machining	
RECOMENDATIONS FOR MACHINING	13

GENERAL CHARACTERISTICS

NOTES

RS 110 RAVNEX is a premium plastic mould steel produced in METAL RAVNE.
Tool steel **RS 110 RAVNEX** is known for its:

- Excellent cleanliness
- High polishability
- Hardness homogeneity
- Improved weldability
- Good photo-etching properties
- High wear resistance in HH version
- Nitribility
- Good weldability
- Machinability

→ RS CHEMICAL COMPOSITION (%)

Controlled chemical composition with minimal concentration of detrimental elements and controlled cleanliness. Cleanliness according to DIN 50602 K1 ≤ 10.

RS GRADE	AISI	W.Nr.	C	Si	Mn	Cr	Mo	Ni
RS 110 RAVNEX	~P20+Ni Mod.	1.2738 Mod. HH ESR	0.26	<0.40	1.50	1.30	0.50	1.0

Chemical element content is in wt %

→ RS APPLICATION

RS 110 RAVNEX is usually used for large moulds where high polishing is required (plastics and rubber, molds for automotive lighting).

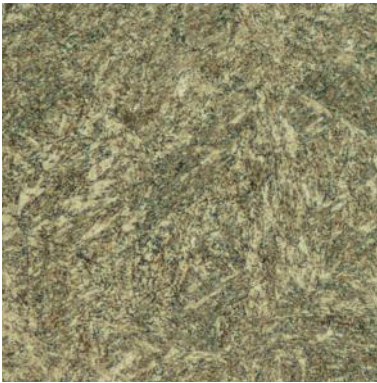
RS 110 RAVNEX is used for plastic injection of interior parts as also for pressure die casting applications as holder material, prototypes.

GENERAL CHARACTERISTICS

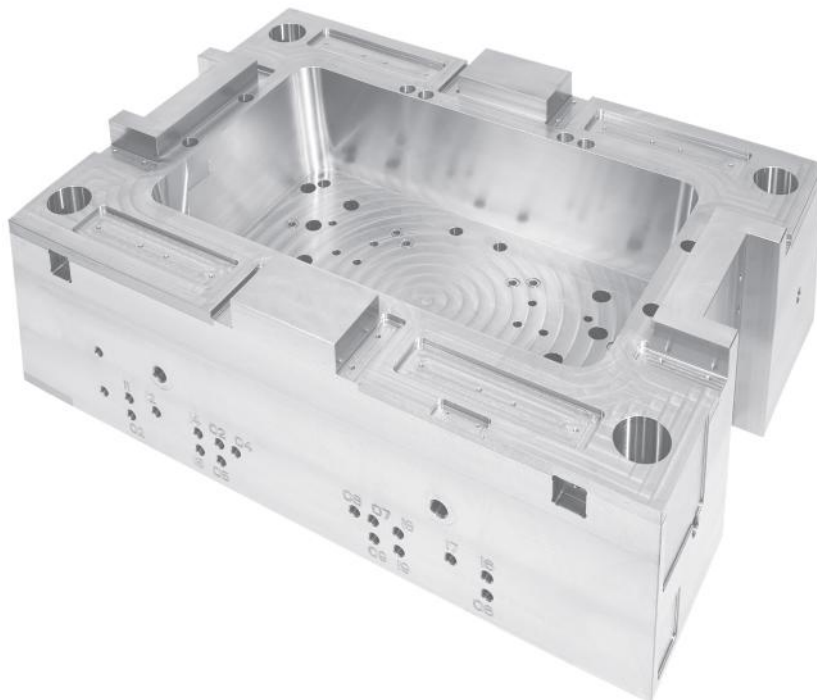
→ MICROSTRUCTURE IN DELIVERED CONDITION

RS 110 RAVNEX is supplied in pre-hardened condition at 310-355 HBW.

RS 110 RAVNEX is inspected in hardened and tempered condition. Microstructure is composed of fully homogenous tempered martensite. High purity and homogeneity of a steel with low level of sulfur give high polishing and photo-etching properties. The polishability additionally increases with increased hardness of a steel. **RS 110 RAVNEX** is delivered in ESR quality.



500 ×



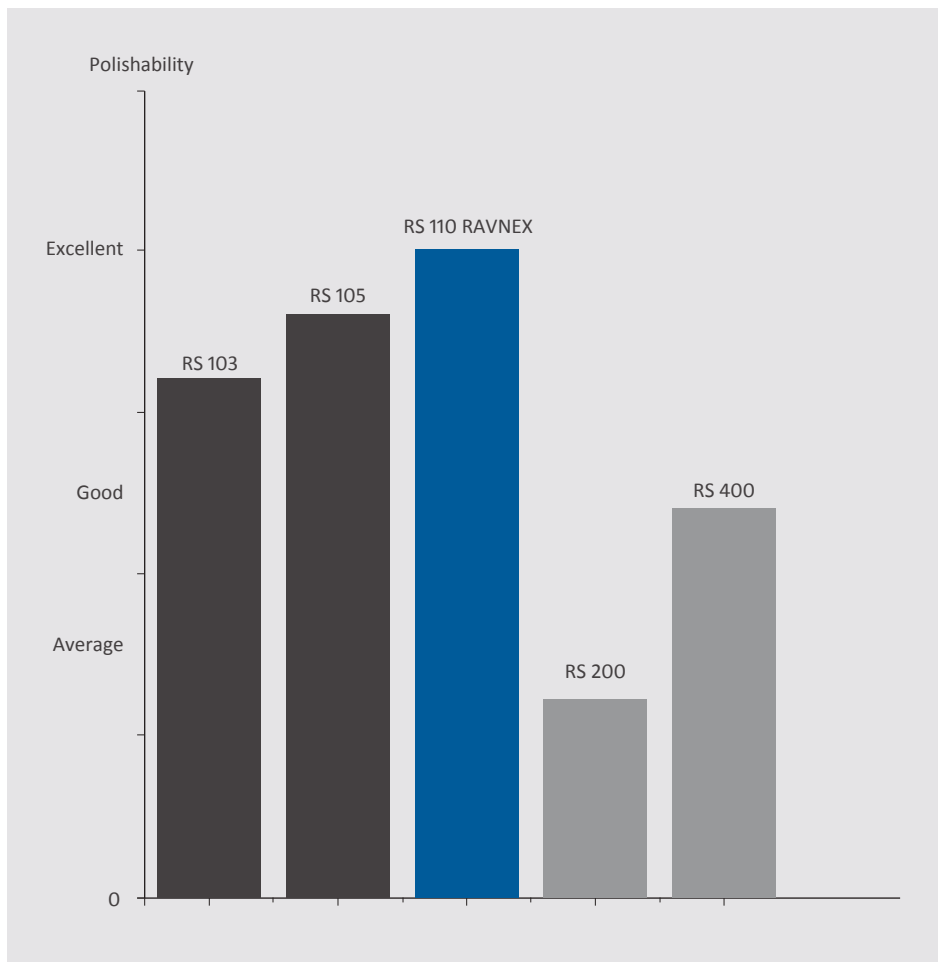
GENERAL CHARACTERISTICS

→ TOUGHNESS

Larger size moulds demand higher toughness to prevent unexpected gross cracking failure.
Larger size moulds are recommended for particular grade.

→ QUALITATIVE COMPARISON

Chart shows high polishability of RS 110 RAVNEX compared to standard and well known RS 103 and RS 105.



PHYSICAL PROPERTIES

NOTES

RS 110 | RAVNEX

→ PHYSICAL PROPERTIES (TEMPERATURE DEPENDENT)

DENSITY (g/cm³)

7.80 (20 °C)	* (400 °C)	* (500 °C)	* (550 °C)	* (600 °C)
--------------	------------	------------	------------	------------

THERMAL CONDUCTIVITY (W/(m.K))

33.20 (20 °C)	34.30 (100 °C)	33.40 (200 °C)	33.40 (300 °C)	31.60 (400 °C)
---------------	----------------	----------------	----------------	----------------

ELECTRIC RESISTIVITY (Ohm.mm²/m)

0.19 (20 °C)	* (400 °C)	* (500 °C)	* (550 °C)	* (600 °C)
--------------	------------	------------	------------	------------

SPECIFIC HEAT CAPACITY (J/(g.K))

0.46 (20 °C)	* (400 °C)	* (500 °C)	* (550 °C)	* (600 °C)
--------------	------------	------------	------------	------------

MODULUS OF ELASTICITY (10³xN/mm²)

205 (20 °C)	* (400 °C)	* (500 °C)	* (550 °C)	* (600 °C)
-------------	------------	------------	------------	------------

COEFFICIENT OF LINEAR THERMAL EXPANSION (10⁻⁶ °C⁻¹, 20 °C)*

11.7 (100 °C)	12.3 (200 °C)	13.0 (300 °C)	13.3 (400 °C)	13.7 (500 °C)
---------------	---------------	---------------	---------------	---------------

MECHANICAL PROPERTIES

NOTES

→ COMPRESSIVE YIELD STRENGTH

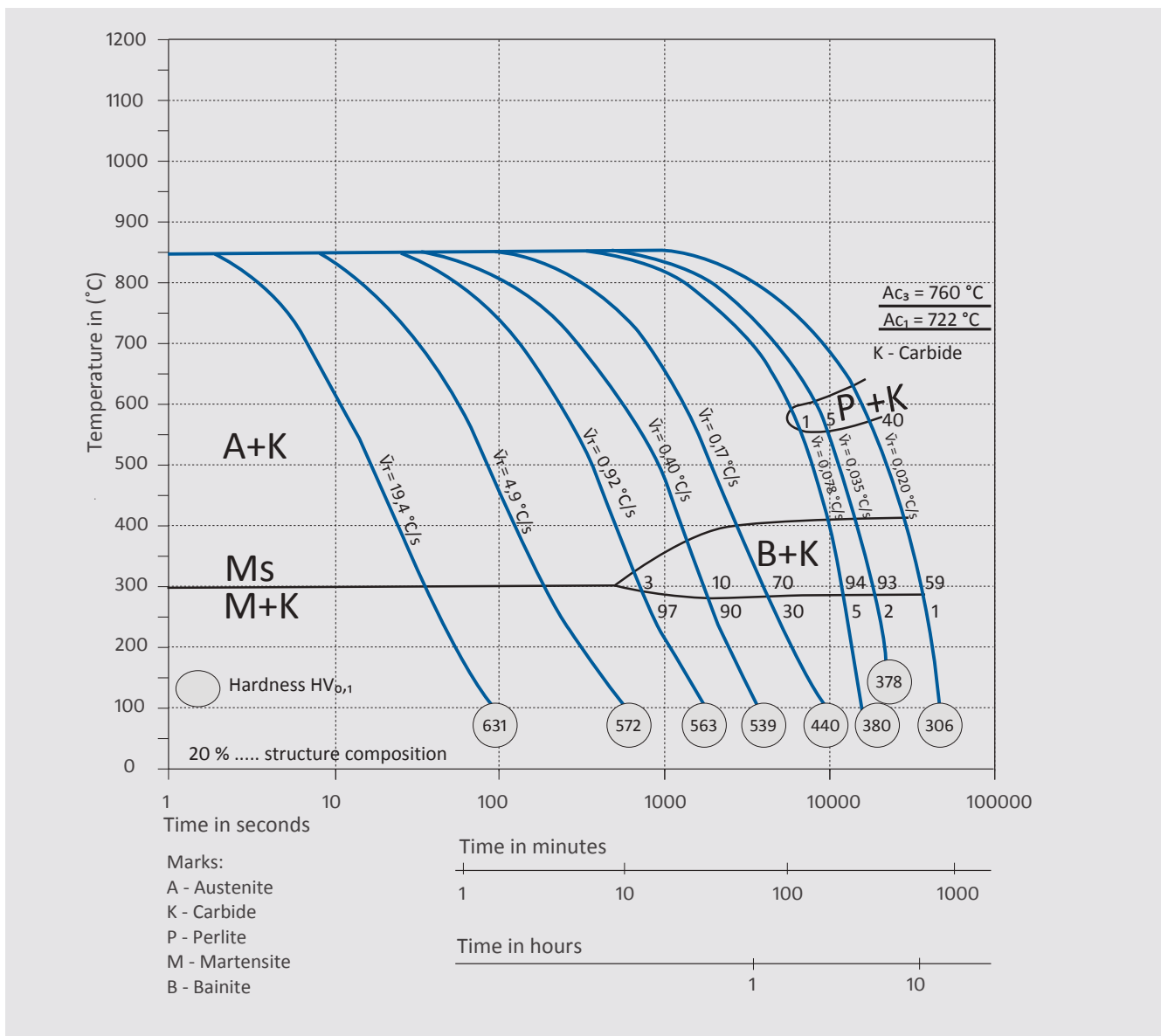
Higher compressive yield strength, RCO.2, of tool steel is needed to avoid or to minimize plastic deformation. Compressive yield strength in as-delivered condition is approx. 1150 N/mm².



CONTINUOUS COOLING CURVES - CCT

NOTES

Austenitising temperature: 850 °C, soak time: 30 min.



TIP 1

→ Pre-hardened tool steels are machined without additional heat treatment, except where additional stress relieving is necessary.

HEAT TREATMENT

NOTES

Recommendations.

→ ANNEALING

HEATING	ANNEALING TEMPERATURE	COOLING
50 °C/h	710 - 740 °C	10 - 20 °C/h
Protect against oxidation, scaling and decarburisation.	2 hours.	Slow in the furnace. From 600 °C cooling in air is possible.

→ STRESS RELIEVING

HEATING	STRESS RELIEVING TEMPERATURE	COOLING
100 °C/h	450-550 °C	20 °C/h
Protect against oxidation and decarburisation.	2 hours.	Slow and uniformly in the furnace to prevent formation of additional residual stresses. Cooling in air is possible.

→ HARDENING

Hardness after hardening is 52 HRC

HEATING	AUSTENITISING	COOLING
25 - 600 °C, 150-220 °C/h 600 - 840 °C, ≤150 °C/h	840 °C	See CCT diagram
Hold in furnace at T = 600 °C until $T_{\text{SURFACE}} - T_{\text{CORE}} \leq 15 \text{ °C}$.	T_{SURFACE} is measured at 15mm underneath surface, maximum soak time is 30 min.	

TIP 2

→ If flame or induction hardening is used in pre-hardened condition slow cooling is necessary with immediate tempering.

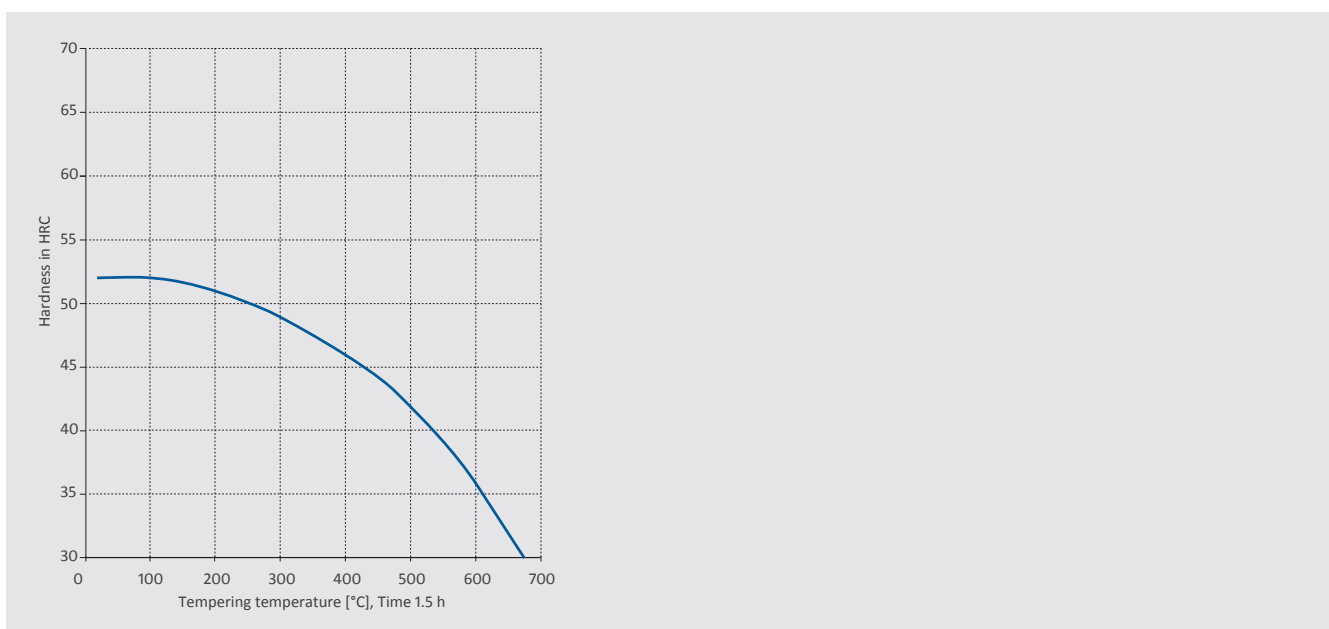
HEAT TREATMENT

→ TEMPERING

Tempering must start immediately after completion of quenching (when part reaches 90-70°C). Two tempering treatments are recommended. First tempering destabilizes retained austenite. Second tempering tempers newly formed microstructure constituents.

HEATING	TEMPERING TEMPERATURE	COOLING
150 °C/h - 250 °C/h	Min. 180 °C	Cool in air or in the furnace to room temperature between tempering cycles.
Protect against oxidation and decarburisation.	1 hour per 25 mm wall thickness based on the furnace temperature. Minimum 2 hours.	

Tempering diagram



TIP 3

→ If tool steel must be re-hardened, annealing should be done prior to hardening.

→ DIMENSIONAL CHANGES DURING HARDENING AND TEMPERING

It is recommended to leave machining allowance before hardening of minimum 0.2 % of dimension, equal in all three directions.

WELDING AND EDM

NOTES

→ WELDING

RS 110 RAVNEX is a readily weldable alloy by TIG or MMA welding processes in hardened or soft-annealed condition. Weldability is better and safer than in the case of RS 103 because of lower carbon content. Filler metal should be of the same or similar composition.

Heat treatment after welding is recommended. Annealing should be performed after welding of soft annealed parts, whereas tempering at temperature of about 50 °C below tempering temperature should be performed after welding of hardened and tempered parts. Laser welding is recommended for repair of smaller cracks and edges.

PREHEATING TEMPERATURE	MAXIMUM INTERPASS TEMPERATURE	POST WELD COOLING
~250 °C	~370 °C	Approx. 30°C/h to not less than 70°C, then tempering.

WELDING METHOD	FILLER MATERIAL	HARDNESS AFTER WELDING
TIG, MMA	P20-Type	~ 320 HB

* Higher tempering temperatures are recommended for polishing or photo-etching.

→ ELECTRICAL DISCHARGE MACHINING

Electrical discharge machining (EDM) leaves a brittle surface layer due to melting and resolidification of surface material.

It is recommended to: (1) remove the resolidified layer by polishing, grinding or other mechanical methods, and (2) temper the work-piece at temperature of about 50 °C below the previous tempering temperature. Execution of tempering of re-hardened and yet untempered layer underneath the surface is critical.

RECOMENDATIONS FOR MACHINING

NOTES

The information below is provided solely as a general machining guideline.
It refers to material in tempered condition.

→ DRILLING

INSERT	DRILL DIAMETER (mm)	CUTTING SPEED (m/min)	FEED (mm/rev)
Coated HSS	5 - 20	20	0.05 - 0.35

→ FACE MILLING

INSERT	CUTTING SPEED (m/min)	FEED (mm/tooth)	DEPTH OF CUT (mm)
P20 c. (rough milling)	100 - 140	0.2 - 0.4	2.0 - 4.0
P10 c. (fine milling)	140 - 170	0.1 - 0.2	- 2.0

→ TURNING

INSERT	CUTTING SPEED (m/min)	FEED (mm/rev)	DEPTH OF CUT (mm)
P20 c. (rough turning)	100 - 150	0.20 - 0.4	2.0 - 4.0
P10 c. (fine turning)	150 - 200	0.05 - 0.2	- 2.0
HSS (fine turning)	15	0.05 - 0.3	- 2.0

* C - Coated carbide

www.rsc.si



PLASTIC MOULD STEEL

is produced by SIJ group | www.sij.si

- Metal Ravne | www.metalravne.com
- Acroni | www.acroni.si

PLASTIC MOULD STEEL

is distributed by Ravne Steel | www.ravne steel.com

- Ravne Steel Center, Slovenia | www.rsc.si
- Sidertoce, Italy | www.sidertoce.com
- Ravne Steel Deutschland, Germany | www.ravnesteel.com